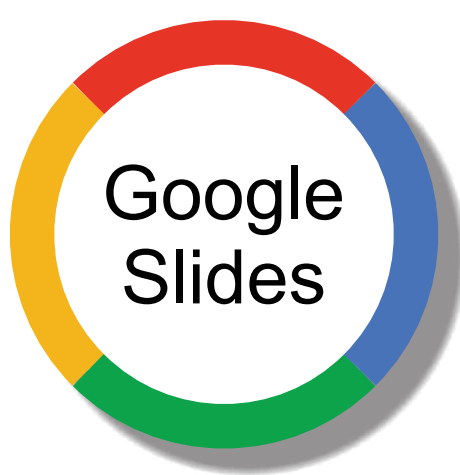


Averages

MEAN #1



1 instruction slide
1 answers slide
8 x 2-digit average slides
8 x 3-digit average slides
8 x 4-digit average slides

Practice finding the MEAN averages.

Each slide presents a small group of numbers and you have to find the mean average. Complete each equation - including the working out - and then the final average number.

An instructions slide clearly shows how the mean average is calculated along with two examples of how to correctly fill in all the fields.

Answers slide is also included!

The **MEAN** is the average of the numbers

Add up all the numbers, then divide by how many numbers there are

$$\frac{1 + 7}{2} = \frac{8}{2} = 4$$

$$\frac{2 + 4 + 6}{3} = \frac{12}{3} = 4$$

The **MEAN** is the average of the numbers

Add up all the numbers, then divide by how many numbers there are

$$\frac{1 + 7}{2} = \frac{8}{2} = 4$$

$$\frac{2 + 4 + 6}{3} = \frac{12}{3} = 4$$

The **MEAN** is the average of the numbers

Add up all the numbers, then divide by how many numbers there are

$$\frac{1 + 7}{2} = \frac{8}{2} = 4$$

$$\frac{2 + 4 + 6}{3} = \frac{12}{3} = 4$$

What is the **MEAN** average of these numbers

1, 3

$$\frac{\square + \square}{2} = \frac{\square}{2} = \square$$

What is the **MEAN** average of these numbers

3, 4, 5

$$\frac{\square + \square + \square}{3} = \frac{\square}{3} = \square$$

What is the **MEAN** average of these numbers

1, 2, 4, 5

$$\frac{\square + \square + \square + \square}{4} = \frac{\square}{4} = \square$$

MEAN #1 - Answers

1, 3 $\frac{1+3}{2} = \frac{4}{2} = 2$	2, 2 $\frac{2+2}{2} = \frac{4}{2} = 2$	1, 5 $\frac{1+5}{2} = \frac{6}{2} = 3$	2, 8 $\frac{2+8}{2} = \frac{10}{2} = 5$	3, 7 $\frac{3+7}{2} = \frac{10}{2} = 5$	4, 8 $\frac{4+8}{2} = \frac{12}{2} = 6$
1, 7 $\frac{1+7}{2} = \frac{8}{2} = 4$	2, 4 $\frac{2+4}{2} = \frac{6}{2} = 3$	1, 2, 3 $\frac{1+2+3}{3} = \frac{6}{3} = 2$	2, 4, 5 $\frac{2+4+5}{3} = \frac{11}{3} = 3.67$	1, 2, 6 $\frac{1+2+6}{3} = \frac{9}{3} = 3$	2, 2, 8 $\frac{2+2+8}{3} = \frac{12}{3} = 4$
3, 4, 6 $\frac{3+4+6}{3} = \frac{13}{3} = 4.33$	1, 5, 12 $\frac{1+5+12}{3} = \frac{18}{3} = 6$	1, 3, 11 $\frac{1+3+11}{3} = \frac{15}{3} = 5$	3, 3, 6 $\frac{3+3+6}{3} = \frac{12}{3} = 4$	1, 1 $\frac{1+1}{2} = \frac{2}{2} = 1$	2, 2, 2, 6 $\frac{2+2+2+6}{4} = \frac{12}{4} = 3$
1, 2, 4 $\frac{1+2+4}{3} = \frac{7}{3} = 2.33$	2, 2, 4 $\frac{2+2+4}{3} = \frac{8}{3} = 2.67$	3, 4, 6 $\frac{3+4+6}{3} = \frac{13}{3} = 4.33$	3, 3, 7 $\frac{3+3+7}{3} = \frac{13}{3} = 4.33$	1, 1, 1 $\frac{1+1+1}{3} = \frac{3}{3} = 1$	5, 5, 5 $\frac{5+5+5}{3} = \frac{15}{3} = 5$

BOUNCE

LEARNING KIDS
Visual Learning Resources