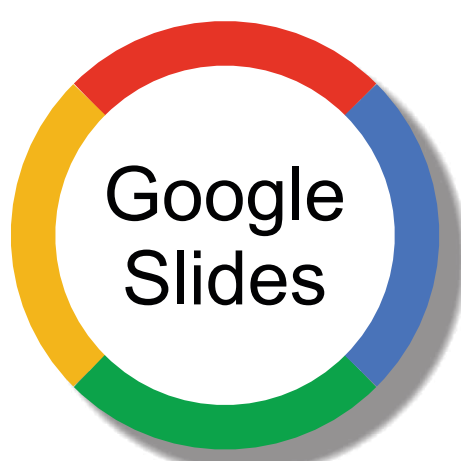


# Averages MIXED



1 instruction slide  
1 answers slide

6 x 3-digits averages slides  
4 x 4-digits averages slides  
4 x 5-digits averages slides  
4 x 6-digits averages slides  
4 x 7-digits averages slides

Practice finding the various averages from a group of numbers.

Each slide presents a small group of numbers and you have to find the mean average, mode average, median average and range of the numbers.

An instructions card clearly shows how each of the four numbers is calculated.

Answers slide is also included!

## Mean

Add up the numbers and then divide by the total number of numbers

## Median

Find the middle number once all numbers have been sorted numerically

## Mode

Find the number that occurs most frequently in the list

## Range

Subtract the lowest number from the highest number

What are all the averages of these numbers?

11, 11, 14

Mean =  Median =   
Mode =  Range =

What are all the averages of these numbers?

5, 10, 6, 4, 5

Mean =  Median =   
Mode =  Range =

What are all the averages of these numbers?

4, 10, 5, 3, 3

Mean =  Median =   
Mode =  Range =

What are all the averages of these numbers?

100, 200, 50, 25, 75, 100, 150

Mean =  Median =   
Mode =  Range =

## MIXED AVERAGES - Answers

5, 2, 2 Mean = 3 Mode = 2 Range = 3	11, 11, 14 Mean = 12 Mode = 11 Range = 3	11, 2, 11 Mean = 8 Mode = 11 Range = 9	22, 22, 1 Mean = 15 Mode = 22 Range = 21
24, 6, 2 Mean = 21 Mode = 24 Range = 9	7, 7, 10 Mean = 8 Mode = 7 Range = 3	1, 6, 2, 1, 0 Mean = 2 Mode = 1 Range = 6	5, 10, 6, 4, 5 Mean = 6 Mode = 5 Range = 5
3, 6 Mean = 4.5 Mode = 3 Range = 3	3, 6 Mean = 4.5 Mode = 3 Range = 3	5, 1, 4 Mean = 3.3 Mode = 5 Range = 3	4, 10, 5, 3, 3 Mean = 5 Mode = 3 Range = 7
6, 7, 5, 7 Mean = 6.25 Mode = 5 Range = 2	1, 1 Mean = 1 Mode = 1 Range = 0	5, 10, 6, 4, 5 Mean = 6 Mode = 5 Range = 5	5, 10, 6, 4, 5 Mean = 6 Mode = 5 Range = 5
5, 14, 7 Mean = 8.67 Mode = 5 Range = 12	100, 200, 50, 25, 75, 100 Mean = 100 Mode = 100 Range = 100		

# BOUNCE

LEARNING KIDS  
Visual Learning Resources