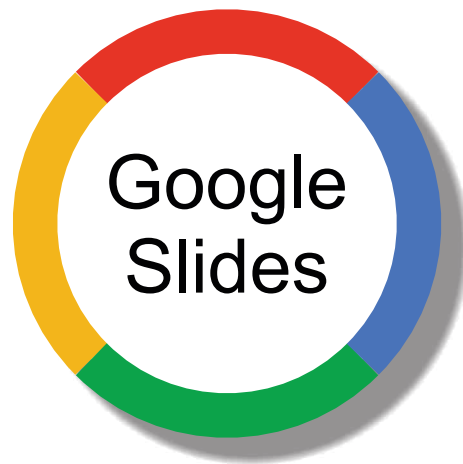


Averages

MODE



1 instruction slide

1 answers slide

4 x 4-digits average slides

4 x 5-digits average slides

4 x 6-digits average slides

4 x 7-digits average slides

4 x 8-digits average slides

Practice finding the MEAN averages.

Each slide presents a small group of numbers and you have to find the mean average. Complete each equation - including the working out - and then the final average number.

An instructions card clearly shows how the mean average is calculated along with two examples of how to correctly fill in all the fields. Unlike the Mean #1 deck, with this deck, the first part of the equation isn't provided, so you have to start by adding up all the numbers yourself.

Answers slide is also included!

The **MODE** is the number that occurs most often

Look for the number that occurs more than any other in the list

3, 5, 6, 2, 3, 1, 7

the only number that occurs twice is 3, so that's the mode, since all other numbers occur only

2, 1, 3, 5, 2, 5, 1, 5, 5, 2

the number 5 occurs four times but no other number occurs that many times, so

What is the **MODE** average of these numbers?

5, 7, 5

What is the **MODE** average of these numbers?

6, 4, 3, 6

What is the **MODE** average of these numbers?

1, 0, 3, 2, 3

What is the **MODE** average of these numbers?

34, 36, 32, 35, 34, 33

What is the **MODE** average of these numbers?

5, 7, 3, 4, 5, 1, 6

What is the **MODE** average of these numbers?

4, 40, 1, 11, 41, 44, 4, 14

MODE - Answers

5, 7, 5
5

1, 1, 4
1

2, 7, 7
7

100, 101, 100
100

6, 4, 3, 6
6

78, 87, 88, 78
78

1001, 1100, 1001, 1010
1001

18, 18, 19, 20
18

5, 3, 4, 5, 5
5

1, 0, 3, 2, 3
3

13, 3, 13, 3, 13
13

23, 21, 22, 22, 24
22

3, 2, 3, 6
3

34, 30, 32, 35, 34, 33
34

99, 88, 77, 99, 66, 55
99

123, 321, 213, 123, 312, 132
123

0, 2, 0, 1, 2, 0, 1
0

5, 7, 3, 4, 5, 1, 6
5

4, 3, 4, 3, 3, 4, 3
3

2, 0, 1
9

4, 40, 1, 11, 44, 4, 14
4

8, 7, 8, 7, 7, 7, 8, 7
7

5, 52, 5, 55, 51, 15, 5, 15
5

7, 4, 8, 2, 3, 2, 8, 2
2

BOUNCE
LEARNING KIDS
Visual Learning Resources