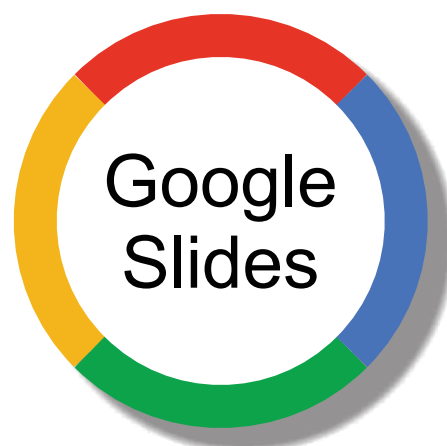


Commonly Confused Words

Whose Who's



6 x multi-choice slides
12 x type the correct word slides

Commonly Confused Word is a series of resources which tackle those homophones that often cause confusion, either because they sound alike or have a similar but different meaning. In this GOOGLE Slides deck, we tackle **Its & It's**. The top of each slide presents a series of examples depicting how each of the featured commonly confused words is to be used correctly - and incorrectly - in a sentence. In the bottom half, the student is shown a sentence with various occurrences of the often confused words as options. Indicate the correct response by highlighting the correct word from the choice given or type the missing words in to complete the sentence correctly.

Commonly Confused Words
Find the correct word to use in the sentence

Whose Possessive	Who's Who is / Who has
Do you know whose book this is? ✓	Who's coming to school today? ✓
Whose question shall I answer first? ✓	Do you know who's turn it is? ✓
Whose bag is that in the corner? ✓	Who's got the best story? ✓
Whose got the right answer? ✗	Who's house is that? ✗

Whose turn is it and whose game are we playing?

Commonly Confused Words
Find the correct word to use in the sentence

Whose Possessive	Who's Who is / Who has
Do you know whose book this is? ✓	Who's coming to school today? ✓
Whose question shall I answer first? ✓	Do you know who's turn it is? ✓
Whose bag is that in the corner? ✓	Who's got the best story? ✓
Whose got the right answer? ✗	Who's house is that? ✗

Whose got whose jacket and whose cold?

Commonly Confused Words
Find the correct word to use in the sentence

Whose Possessive	Who's Who is / Who has
Do you know whose book this is? ✓	Who's coming to school today? ✓
Whose question shall I answer first? ✓	Do you know who's turn it is? ✓
Whose bag is that in the corner? ✓	Who's got the best story? ✓
Whose got the right answer? ✗	Who's house is that? ✗

When we know [] been, we can decide [] next.

Commonly Confused Words
Find the correct word to use in the sentence

Whose Possessive	Who's Who is / Who has
Do you know whose book this is? ✓	Who's coming to school today? ✓
Whose question shall I answer first? ✓	Do you know who's turn it is? ✓
Whose bag is that in the corner? ✓	Who's got the best story? ✓
Whose got the right answer? ✗	Who's house is that? ✗

[] that and [] been right?

BOUNCE

LEARNING KIDS
Visual Learning Resources