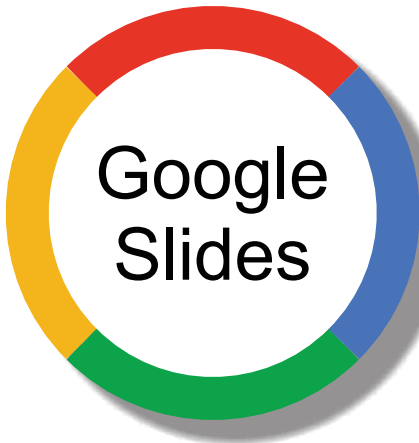


Commonly Confused Words

Your You're



6 x multi-choice slides
12 x type the correct word slides

Commonly Confused Word is a series of resources which tackle those homophones that often cause confusion, either because they sound alike or have a similar but different meaning. In this GOOGLE Slides deck, we tackle **Your & You're**. The top of each slide presents a series of examples depicting how each of the featured commonly confused words is to be used correctly - and incorrectly - in a sentence. In the bottom half, the student is shown a sentence with various occurrences of the often confused words as options. Indicate the correct response by highlighting the correct word from the choice given or type the missing words in to complete the sentence correctly.

Commonly Confused Words

Find the correct word to use in the sentence

Your

Belongs to you

It's *your* turn to play. ✓

Your writing is very clear. ✓

Can I play with *your* ball? ✓

I see that *your* often tired. ✗

You're

You are

You're very helpful to me. ✓

When you're ready, begin. ✓

You're very clever. ✓

Is that you're homework? ✗

Your

You're

kind and

your

you're

helpful and

your

you're

friendly.

Commonly Confused Words

Find the correct word to use in the sentence

Your

Belongs to you

It's *your* turn to play. ✓

Your writing is very clear. ✓

Can I play with *your* ball? ✓

I see that *your* often tired. ✗

You're

You are

You're very helpful to me. ✓

When you're ready, begin. ✓

You're very clever. ✓

Is that you're homework? ✗

It's

your

your're

turn to make

your

you're

mark with

your

you're

pencil.

Commonly Confused Words

Find the correct word to use in the sentence

Your

Belongs to you

It's *your* turn to play. ✓

Your writing is very clear. ✓

Can I play with *your* ball? ✓

I see that *your* often tired. ✗

You're

You are

You're very helpful to me. ✓

When you're ready, begin. ✓

You're very clever. ✓

Is that you're homework? ✗

very nice and

smile is cute too.

Commonly Confused Words

Find the correct word to use in the sentence

Your

Belongs to you

It's *your* turn to play. ✓

Your writing is very clear. ✓

Can I play with *your* ball? ✓

I see that *your* often tired. ✗

You're

You are

You're very helpful to me. ✓

When you're ready, begin. ✓

You're very clever. ✓

Is that you're homework? ✗

smile is

nicest of

tures.

BOUNCE

LEARNING KIDS

Visual Learning Resources