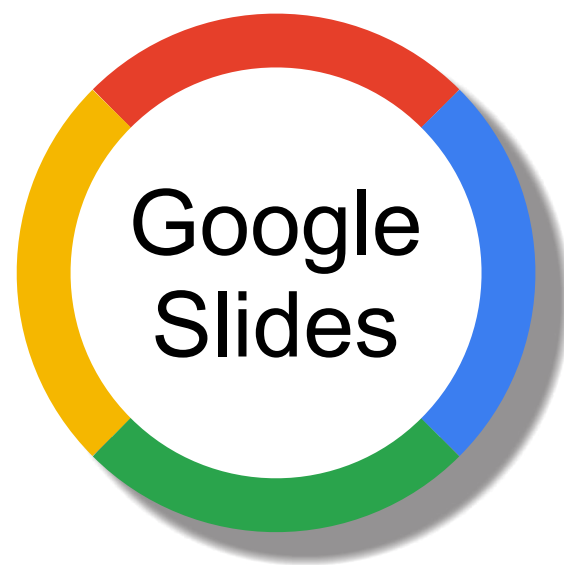


# Crossword math 1

## Addition 2 - harder



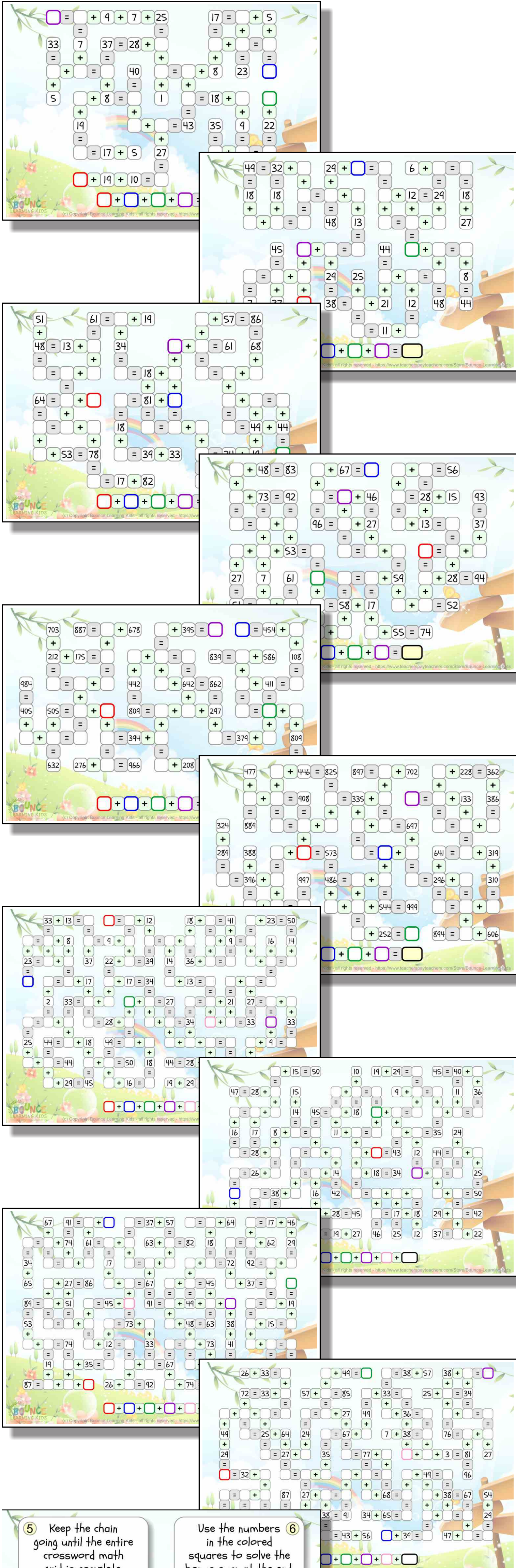
17 Google slides

3 instruction slides

1 solutions side

10 addition puzzle slides

If you like math games and puzzles, you'll love Crossword math 1, which is a GOOGLE Slides digital distance learning deck to exercise basic math skills. This set of slides features addition practice. It's like doing a regular crossword but with numbers instead of words. This is an amazingly fun way to make math seem like play. The crossword 'clues' are math sums you have to complete in the grid itself. The concept is very simple. Solve one math sum in order to solve the next that adjoins it. Work your way around the grid until all the sums are solved. Once the entire grid is solved, put the select highlighted numbers into the grid below to solve the bonus math equation at the bottom for a bit of extra fun. There are 3 grid sizes. The smaller the grid, the fewer the sums there are. The larger the grid, the more sums there are. The grids have anywhere from 10 to 60 or more sums to solve depending on which size. There are 2 versions of each grid size. Some grids have sums involving numbers 1-50, other 1-100 and some 1-1000. All the sums are either single digit or double digit addition.



5 Keep the chain going until the entire crossword math grid is complete.

$$\begin{array}{c} 10 = 1 + 9 \\ + \\ 4 \\ = \\ 3 + 5 = 8 \end{array}$$

6 Use the numbers in the colored squares to solve the bonus sum at the end.

$$\begin{array}{c} 10 = 1 + 9 \\ + \\ 4 \\ = \\ 3 + 5 = 8 \end{array}$$

3 Solve the sum to find the missing number.

$$\begin{array}{c} 10 = 1 + 9 \\ + \\ 4 \\ = \\ 3 + 5 = 8 \end{array}$$

4 Once you solve one, you can solve the next that joins to it.

$$\begin{array}{c} 10 = 1 + 9 \\ + \\ 4 \\ = \\ 3 + 5 = 8 \end{array}$$

1 Study each crossword math grid.

$$\begin{array}{c} 10 = \square + 9 \\ + \\ 4 \\ = \\ 3 + \square = \square \end{array}$$

2 See how some numbers are missing?

$$\begin{array}{c} 10 = \square + 9 \\ + \\ 4 \\ = \\ 3 + \square = \square \end{array}$$

SOLUTIONS

$$\begin{array}{l} 12 + 25 + 13 + 49 = 99 \\ 16 + 16 + 30 + 13 = 75 \\ 46 + 12 + 127 \\ 49 + 12 + 228 \\ 88 + 57 + 25 + 320 \\ 28 + 13 + 17 + 21 + 34 + 113 \\ 47 + 48 + 8 + 7 + 16 + 126 \\ 88 + 57 + 25 + 320 \\ 67 + 72 + 8 + 18 \end{array}$$