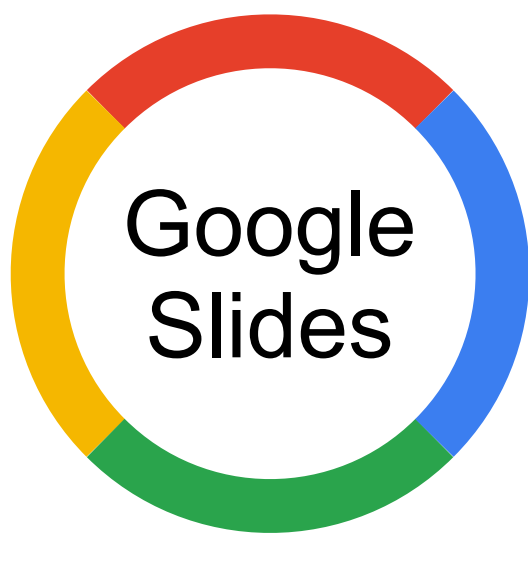


# Tables #2



Learn to read tables

36 Google slides

Learn to read tables with this series of Google slides. This virtual learning Google Slides deck is all about learning how to read and understand the information presented in a table. There are 6 different tables in this deck, each with 6 question slides. The questions are designed to force the student to review the information in the table methodically, find associations, correlate information and to cross-reference between the rows and columns in order to find the answer. As the decks progress, the tables become slightly more complicated, with more rows and levels of difficulty in the questions, etc. Each table has 3-5 columns. Learning to read and understand tables provides an excellent foundation for learning to read and understand spreadsheets.

The following table lists various countries, their capital city and national language.

Country	Capital	Language
England	London	English
France	Paris	French
Australia	Canberra	English
New Zealand	Wellington	English
Spain	Madrid	Spanish

In which countries is English NOT the national language?

The following table lists various countries, their capital city and national language.

Country	Capital	Language
England	London	English
France	Paris	French
Australia	Canberra	English
New Zealand	Wellington	English
Spain	Madrid	Spanish

What is the capital of the country that has 2 words?

The following table lists what I buy each day and how much it costs.

Day	Food	Price
Monday	Bread	25
Tuesday	Eggs	20
Wednesday	Milk	15
Thursday	Sugar	15
Friday	Fruit	30

On which day is the most expensive item purchased?

The following table lists what I buy each day and how much it costs.

Day	Food	Price
Monday	Bread	25
Tuesday	Eggs	20
Wednesday	Milk	15
Thursday	Sugar	15
Friday	Fruit	30

How much is spent on Wednesday and on which item?

The following table lists various values in each row and column.

	Column A	Column B	Column C
Row 1	20	15	35
Row 2	15	30	30
Row 3	7	5	10
Row 4	20	20	0
Row 5	5	5	5

In which row are all the numbers the same?

The following table lists various values in each row and column.

	Column A	Column B	Column C
Row 1	20	15	35
Row 2	15	30	30
Row 3	7	5	10
Row 4	20	20	0
Row 5	5	5	5

What can you find at the intersection of Column B and Row 2?

The following table lists various animals in each row and column.

	Column A	Column B	Column C
Row 1	Dog	Cat	Fish
Row 2	Bird	Fish	Rabbit
Row 3	Cat	Dog	Dog
Row 4	Lion	Zebra	Hippo
Row 5	Goat	Cow	Sheep

Which rows contain only animals that have 4 legs?

The following table lists various animals in each row and column.

	Column A	Column B	Column C
Row 1	Dog	Cat	Fish
Row 2	Bird	Fish	Rabbit
Row 3	Cat	Dog	Dog
Row 4	Lion	Zebra	Hippo
Row 5	Goat	Cow	Sheep

How many cells are in rows 3 & 4 together?

The following table lists how many days of the week are in the first 5 months.

	Jan	Feb	Mar	Apr	May
Mon	4	4	5	4	4
Tue	4	4	5	4	4
Wed	5	4	4	5	4
Thu	5	4	4	5	4
Fri	5	4	4	4	5
Sat	4	5	4	4	5
Sun	4	4	5	4	5

In which month(s) do days appear 5 times the most often?

The following table lists how many days of the week are in the first 5 months.

	Jan	Feb	Mar	Apr	May
Mon	4	4	5	4	4
Tue	4	4	5	4	4
Wed	5	4	4	5	4
Thu	5	4	4	5	4
Fri	5	4	4	4	5
Sat	4	5	4	4	5
Sun	4	4	5	4	5

How many days appear exactly 4 times in April?

The following table lists various colored shapes.

	A	B	C	D	E
1	■	■	■	▲	■
2	■	■	■	▲	■
3	▲	■	■	▲	■
4	▲	■	■	▲	■
5	■	■	■	▲	■
6	■	■	■	▲	■
7	■	■	■	▲	■

Which row has the fewest green shapes?

The following table lists various colored shapes.

	A	B	C	D	E
1	■	■	■	▲	■
2	■	■	■	▲	■
3	▲	■	■	▲	■
4	▲	■	■	▲	■
5	■	■	■	▲	■
6	■	■	■	▲	■
7	■	■	■	▲	■